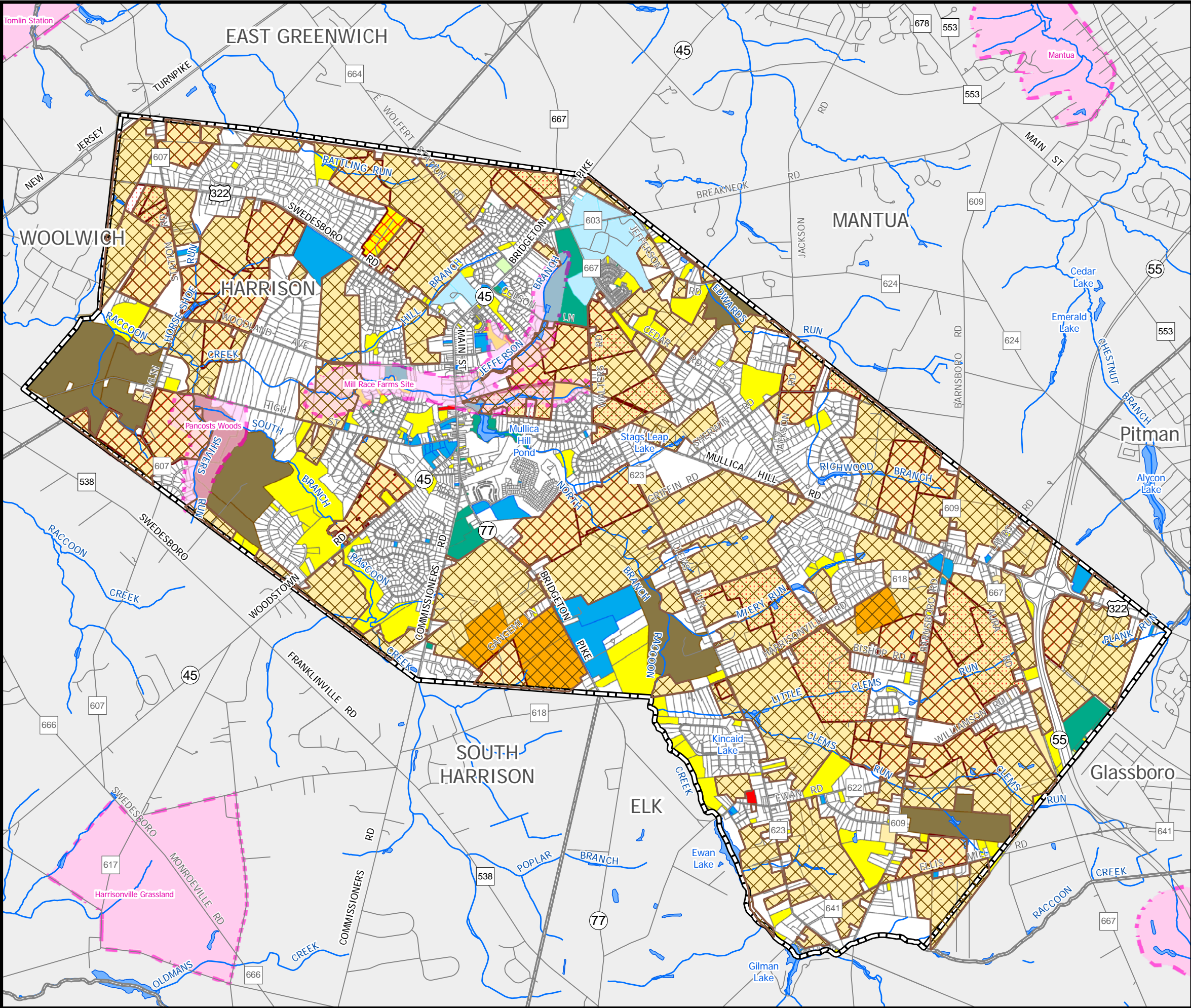


# Harrison Township

## Map 9: Potential Farmland Preservation



- Natural Heritage Priority Site
- Approved Development (as of January 2005)
- Concept Plan (submitted as of January 2005)
- Farmland Preservation (Permanent)
- Farmland Preservation (8 Year)
- Gloucester County Owned- Class 15C
- Harrison Township Owned - Class 15C
- Church, Charitable Property or Private School - Class 15B, 15D, 15E & 15F
- Public School Property - Class 15A
- Fire Station - Class 15F
- Farm Assessed Property - Class 3A & 3B
- Vacant Property - Class 1
- Developed Land
- Proposed Farmland Preservation

Source : NJDEP, NJDOT, Gloucester County, DVRPC.  
This map was developed using New Jersey Department of Environmental Protection Geographic Information System digital data, but this secondary product has not been verified by NJDEP and is not state-authorized.

0 0.5 1 Miles

